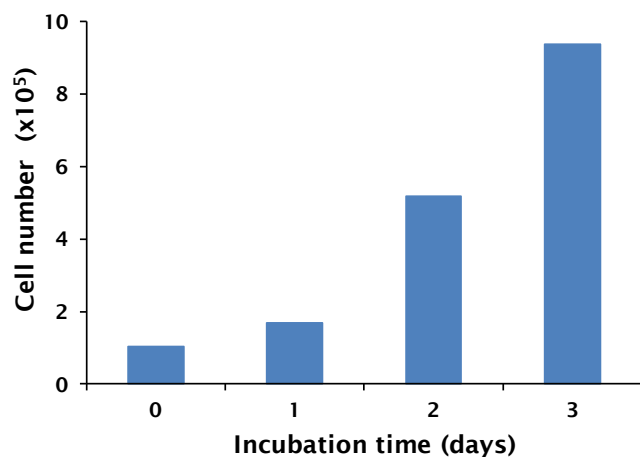


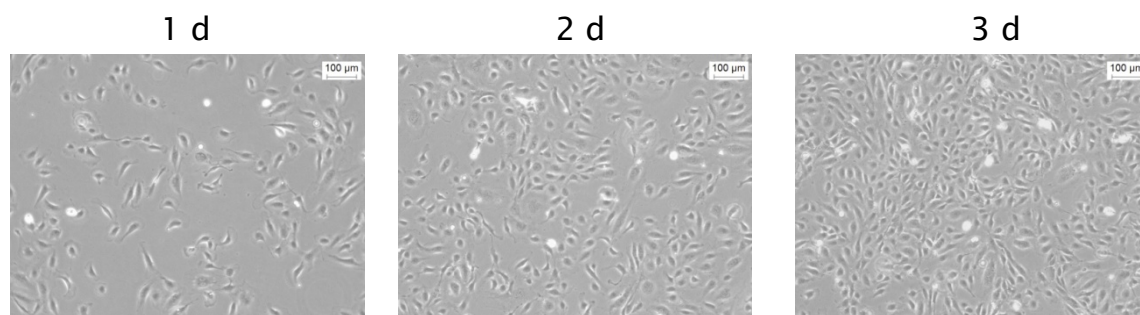
## Cell type: HUVEC

### Performance of Eppendorf Cell Culture Consumables (TC treated)

**Procedure:** Human umbilical vein endothelial cells (HUVEC) were seeded in appropriate culture medium (EGM™-2 BulletKit™). Cell Culture vessels were incubated at 37 °C with a humidified 5 % CO<sub>2</sub> atmosphere. Cell growth and morphology was monitored on day 1, 2 and 3 post-seeding.



Bars represent average count of two wells of an Eppendorf 6-Well Cell Culture Plate



Representative light microscope images (100X magnification)

The tissue culture (TC) treated surface of Eppendorf Cell Culture Consumables allows optimal attachment and homogeneous growth of **HUVEC**.

Your local distributor: [www.eppendorf.com/contact](http://www.eppendorf.com/contact)  
 Eppendorf AG · 22331 Hamburg · Germany  
[eppendorf@eppendorf.com](mailto:eppendorf@eppendorf.com) · [www.eppendorf.com](http://www.eppendorf.com)

[www.eppendorf.com](http://www.eppendorf.com)

EGM™ and BulletKit™ are trademarks of Lonza Group Ltd, Switzerland. Eppendorf® and the Eppendorf logo are registered trademarks of Eppendorf AG, Germany. U.S. Design Patents are listed on [www.eppendorf.com/ip](http://www.eppendorf.com/ip). All rights reserved, including graphics and images. Copyright © 2014 by Eppendorf AG.